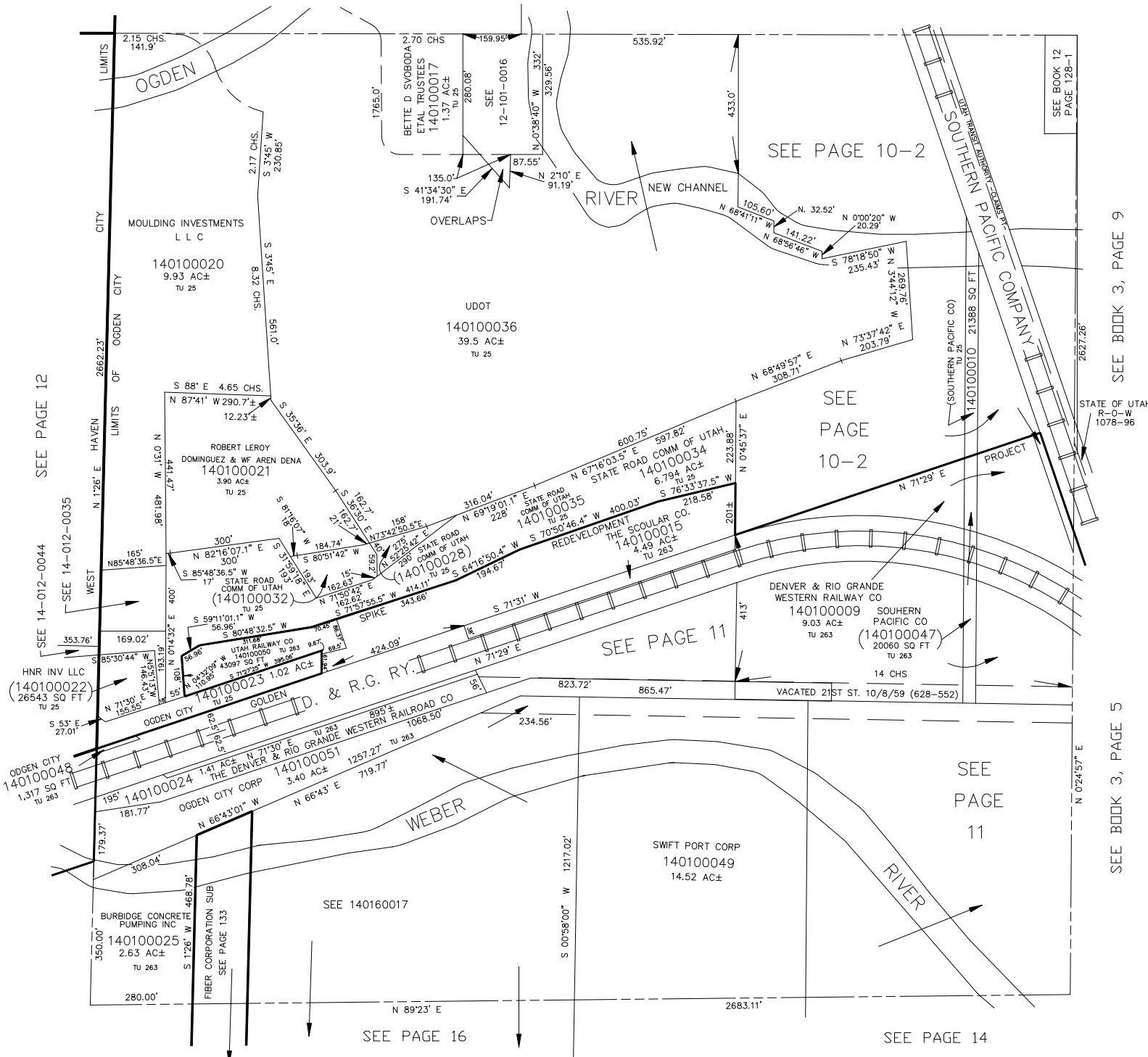


N.E. 1/4
SECTION 30, T.6N., R.1W., S.L.B. & M.

IN OGDEN CITY
SCALE 1" = 200'

TAXING UNIT: 25, 263

SEE BOOK 12, PAGE 101



SEE BOOK 12
PAGE 128-1

SEE BOOK 3, PAGE 9

SEE BOOK 3, PAGE 5

SEE PAGE 12

SEE 14-012-0044
SEE 14-012-0035

OGDEN CITY
140100048
1.317 SQ FT
TU 263

OGDEN CITY
140100022
26543 SQ FT
TU 25

OGDEN CITY
140100024
1.41 AC±
TU 263

OGDEN CITY
140100025
2.63 AC±
TU 263

MOULDING INVESTMENTS
L L C
140100020
9.93 AC±
TU 25

ROBERT LEROY
DOMINGUEZ & WF AREN DENA
140100021
3.90 AC±
TU 25

STATE ROAD
COMM OF UTAH
(140100032)
TU 25

UTAH RAILWAY CO
140100023
1.02 AC±
TU 263

OGDEN CITY CORP
140100024
3.40 AC±
TU 263

BURBIDGE CONCRETE
PUMPING INC
140100025
2.63 AC±
TU 263

FIBER CORPORATION SUB
140100026
1.33 AC±
TU 263

BETTIE D SVOBODA
ETAL TRUSTEES
140100017
1.37 AC±
TU 25

UDOT
140100036
39.5 AC±
TU 25

STATE ROAD COMM OF UTAH
140100034
6.794 AC±
TU 25

STATE ROAD COMM OF UTAH
140100035
TU 25

REDEVELOPMENT
THE SCOLAR CO.
140100015
4.49 AC±
TU 263

DENVER & RIO GRANDE
WESTERN RAILWAY CO
140100009
9.03 AC±
TU 263

SOUTHERN PACIFIC CO
(140100047)
20060 SQ FT
TU 263

SWIFT PORT CORP
140100049
14.52 AC±
TU 263

SEE PAGE 10-2

SEE PAGE 10-2

SEE PAGE 11

SEE PAGE 11

SEE PAGE 16

SEE PAGE 14

STATE OF UTAH
R-O-W
1078-96